

Lightning Talks:

Community-Centered Resilience

Community-Led Climate Resilience Programs in Urban and Rural Communities

Qiyamah Williams,
Mississippi State University Extension/
Mississippi-Alabama Sea Grant

Increasing Community Resilience through Washington State's interagency Coastal Hazard Organizational Resilience Team (COHORT)

Ellen Chappelka, Washington State Emergency
Management Division
Sanpisa Sritairat, Washington Sea Grant

Bridging Communities: Evaluating Engagement Strategies in the Connecticut Community Participation and Risk Communication Pilot

Sarah Schechter, Connecticut Sea Grant

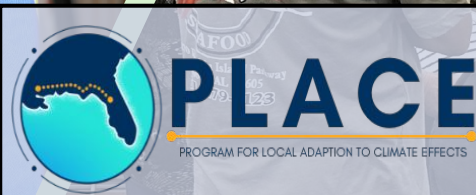




Collaborative Climate Resilience in Urban & Rural Communities

Learned Best Practices in East Biloxi and South Mobile County

Qiyamah Williams



Understand Risk

- Improve data and information accessibility

Communicate Risk

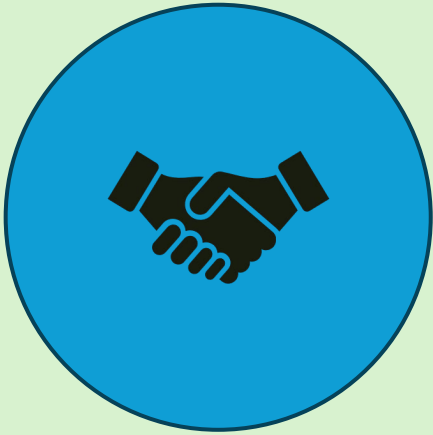
- Support appropriate use and application of data and information

Facilitate Action

- Foster multi-directional dialogue



Community Engagement Framework



BUILD COLLABORATIVE
RELATIONSHIPS WITH
COMMUNITY PARTNERS



DISCUSS CLIMATE
EFFECTS WITH
COMMUNITY AND
IMPLEMENT ACTION



ENHANCE COMMUNITY
CAPACITY FOR
SUSTAINED ACTION

Focus on underserved communities with chronic flood risk issues



East Biloxi



Coden



Bayou La Batre



Irvington

Resilient East Biloxi

South Mobile County



Gulf Coast AL-MS



Building Communities. Growing Leaders.

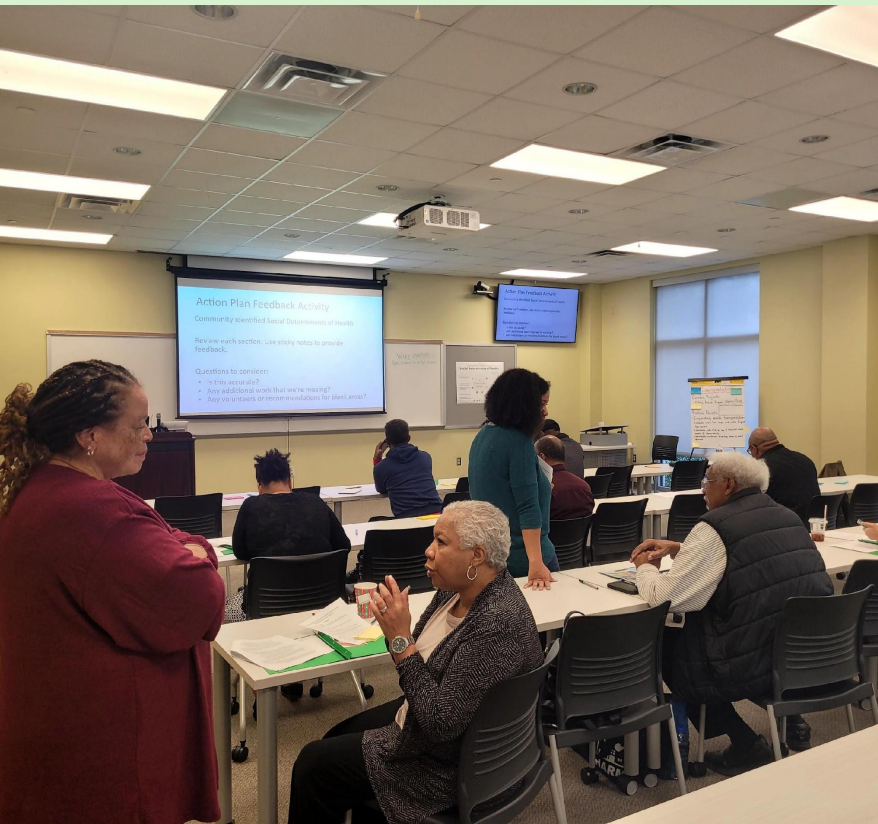


Gulf States
Health Policy Center



Equitable Neighborhoods Initiative





Resilient East Biloxi Program

- Series of community leader trainings and resident engagement events
 - Resilience education
 - Collaboration
 - Organizational capacity building
- Holistic view of community resilience
 - Social Determinants of Health
- REB Action Plan to catalogue needs and ongoing work

Community Resilience in South Mobile County



- Community listening sessions on flood risk
 - Community experiences and flood concerns
 - Desired solutions and community actions



- Resilience activity to address community flooding
 - Rain barrel demonstration and educational signage
 - Distribution of rain barrels to community members



Key Outcomes & Differences

Decisions to Community Resilience

- Locally relevant products to support observations
- Driven by community feedback and needs

Language translation services

- Community partners leading translations
- Vietnamese, Spanish, Khmer

Community Capacity

- Community spread over greater distance
- One person; multiple roles
- Organizational capacity

Barriers to Municipal Support

- City vs County vs Unincorporated
- Capacity of involvement



Continued Momentum

- Sustained relationships through unfunded periods
- Preparation for future funds
- Planning and implementation
 - Developing clear community vision

Future resilience actions:

- Community gathering centers with resilience hubs features
- Smaller capacity building grants to address action plan

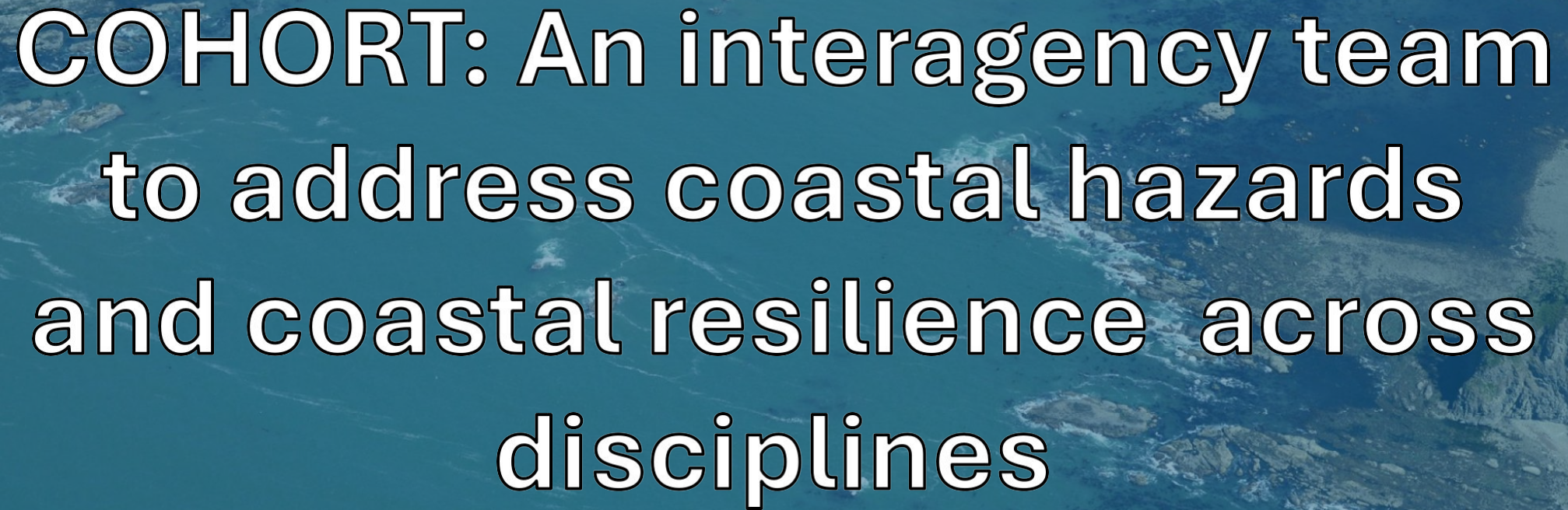


Qiyamah Williams
Community Resilience Specialist
Qiyamah.Williams@msstate.edu
www.PlaceSLR.com



PLACE
PROGRAM FOR LOCAL ADAPTION TO CLIMATE EFFECTS

MISSISSIPPI STATE UNIVERSITY
EXTENSION



COHORT: An interagency team to address coastal hazards and coastal resilience across disciplines

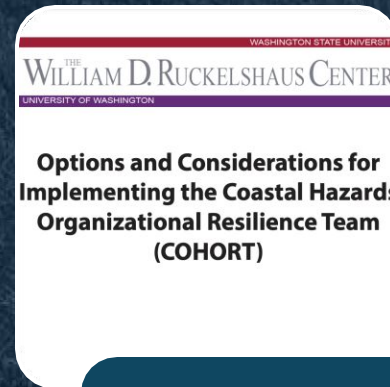
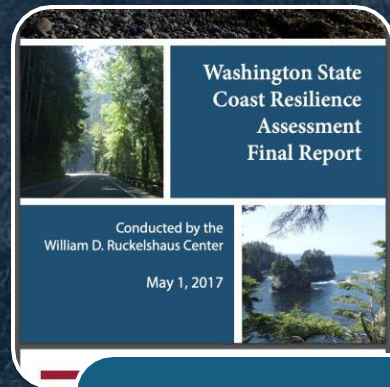




COHORT

The Coastal Hazards Organizational Resilience Team (COHORT) was developed in response to coastal communities' request for the state to help address the growing severity of natural hazards, which include flooding, erosion, sea level rise, landslides, and a Cascadia earthquake and tsunami event.

COHORT Development Timeline



Identified gaps and needs (limited local capacity); recommended inter-agency coordination

Outline options and considerations to create COHORT

RAD: Pilot COHORT project scoping and support

Legislature support to fund COHORT



COHORT Mission

- The COHORT works collaboratively with Tribes and diverse and underserved communities on the co-creation of resilience projects and planning efforts. These projects are co-created to enhance community capacity to address current and future challenges arising from coastal hazards and changing coastal conditions.

Holistic Mitigation Engagement





Addressing Community's Priorities

Stakeholder Engagement

A group of approximately ten people are gathered outdoors in a field of tall grass under a clear blue sky. They are dressed in casual attire, including jackets, hats, and jeans. One person in the foreground is holding a large document or map, and the group appears to be in a collaborative discussion. The background shows a flat landscape extending to the horizon.

Engaged in 200+ stakeholder engagement events across all 15 coastal counties in Washington in first year of COHORT



Community Workshops

- Support the development, facilitation, and next steps of community workshops in conjunction with local partners

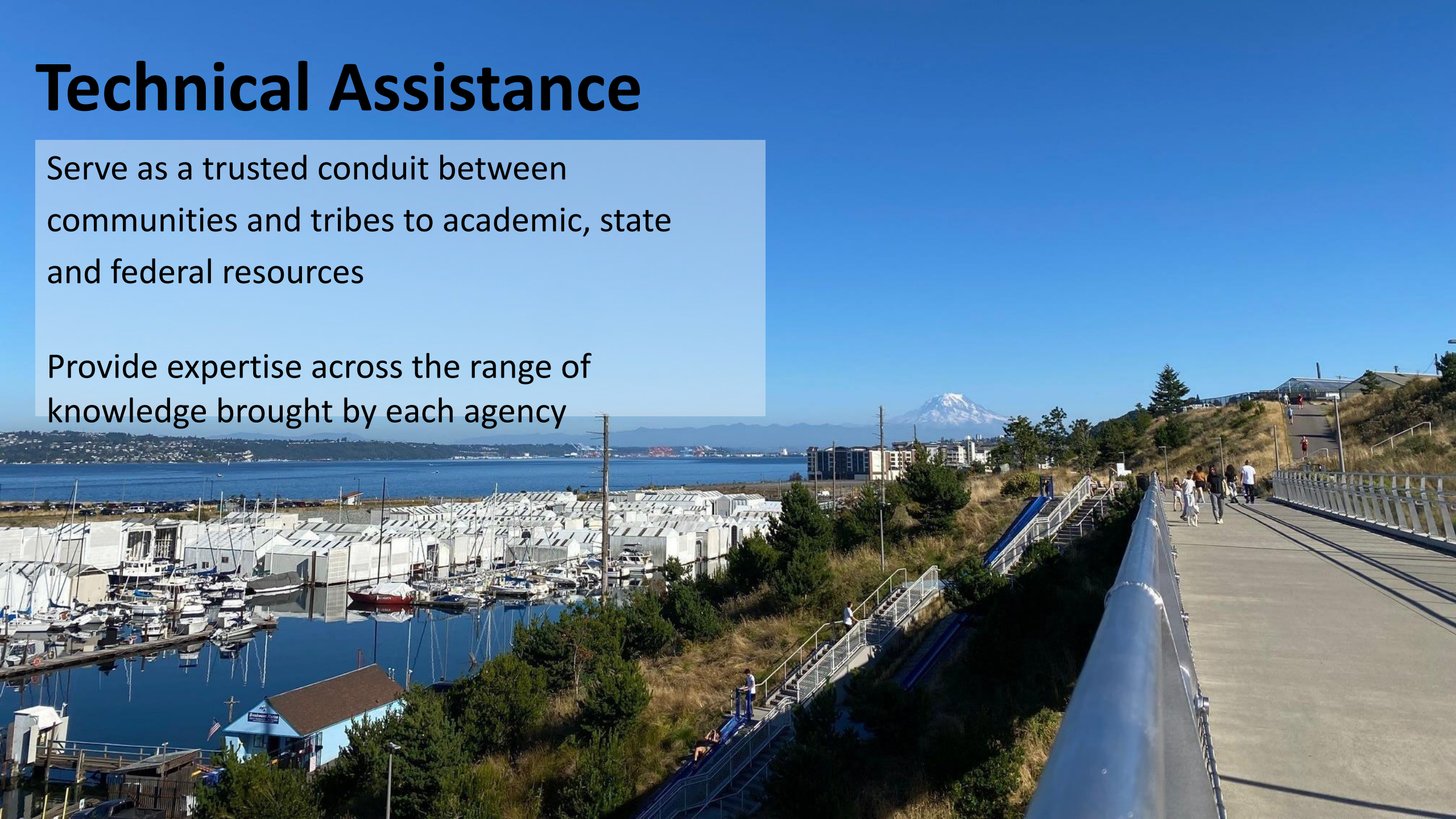
Direct Technical Assistance



Technical Assistance

Serve as a trusted conduit between communities and tribes to academic, state and federal resources

Provide expertise across the range of knowledge brought by each agency



2024 Washington State Winter Storms Forum



Education and
Training

Planning

